

LA GAMMA
THE RANGE
LA GAMME
MODELL ÜBERSICHT
LA GAMA
МОДЕЛЬНЫЙ РЯД



EUROCOMACH®





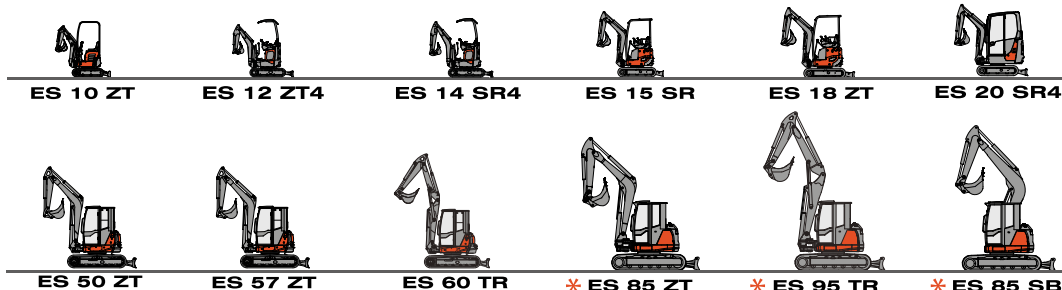
MINIESCAVATORI

MINI-EXCAVATORS / MINI-PELLES / MINIBAGGER

MINIEXCAVADORAS / МИНИ-ЭКСКАВАТОРЫ



* Available for EXTRA - UE and EXTRA - US MARKETS only



| Modello Model Modèle Modell Modelo Модель | Peso Weight Poids Betriebsgewicht Peso Масса | Tipo motore Engine type Type moteur Motor Motor Тип двигателя | Potenza motore Engine power Puissance moteur Motorleistung Potencia motor Мощность двигателя | Profondità di scavo Digging depth Prof. d'excavation Grabtiefe Prof. de excavación Глубина выемки грунта | Larghezza max Max. width Largeur max. Max. breite Anchura max. Макс. ширина |
|--|---|--|---|---|--|
| ES 10 ZT | 1060 kg (2337 lb) | YANMAR 2TNV70 | 7,6 kW (10,0 HP) | 1620 mm (63,8 in) | min 760 mm (Мин. 29,9 in) max 990 mm (Макс. 39,0 in) |
| ES 12 ZT4 | 1160 Kg (2557 lb) | KUBOTA D722 | 10,2 KW (13,7 HP) | 1860 mm (73,2 in) | min 790 mm (Мин. 31,1 in) max 1050 mm (Макс. 41,3 in) |
| ES 14 SR4 | 1230 Kg (2712 lb) | KUBOTA D722 | 10,2 KW (13,7 HP) | 2045 mm (80,5 in) | min 790 mm (Мин. 31,1 in) max 1050 mm (Макс. 41,3 in) |
| ES 15 SR | 1540 kg (3395 lb) | YANMAR 3TNV70 | 11,2 kW (15,2 HP) | 2100 mm (82,7 in) | 990 mm (39,0 in) |
| ES 18 ZT | 1730 kg (3813 lb) | YANMAR 3TNV70 | 11,2 kW (15,2 HP) | 2300 mm (90,6 in) | min 990 mm (Мин. 39,0 in) max 1300 mm (Макс. 51,2 in) |
| ES 20 SR4 | 1930 Kg (4255 lb) | KUBOTA D1105-E3B | 16,2 KW (22HP) | 2300 mm (90,6 in) | min 990 mm (Мин. 39,0 in) max 1300 mm (Макс. 51,2 in) |
| ES 22 SR | 2160 kg (4761 lb) | YANMAR 3TNV76 | 14,0 kW (19,0 HP) | 2493 mm (98,2 in) | 1450 mm (57,1 in) |
| ES 25 ZT | 2450 kg (5401 lb) | YANMAR 3TNV76 | 15,5 kW (21,1 HP) | 2725 mm (107,2 in) | 1500 mm (59,1 in) |
| ES 28.2 ZT | 2700 kg (5952 lb) | KUBOTA D1503-M | 24,9 kW (33,4 HP) | 2570 mm (101,1 in) | 1550 mm (61,0 in) |
| ES 35.2 ZT | 3350 kg (7385 lb) | KUBOTA D1503-M | 24,9 kW (33,4 HP) | 2880 mm (113,3 in) | 1580 mm (62,2 in) |
| ES 40.2 ZT | 3800 kg (8377 lb) | KUBOTA D1803-M | 28,3 kW (38,0 HP) | 3200 mm (126,0 in) | 1700 mm (66,9 in) |



ES 22 SR



ES 25 ZT



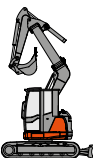
ES 28.2 ZT



ES 35.2 ZT



ES 40.2 ZT



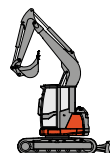
*** ES 90 UR**



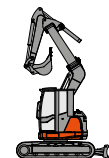
ES 85 ZT4



ES 95 TR4



ES 85 SB4



ES 90 UR4

Modello
Model
Modèle
Modell
Modelo
Модель

Peso
Weight
Poids
Betriebsgewicht
Peso
Масса

Tipo motore
Engine type
Type moteur
Motor
Motor
Тип двигателя

Potenza motore
Engine power
Puissance moteur
Motorleistung
Potencia motor
Мощность двигателя

Profondità di scavo
Digging depth
Prof. d'excavation
Grabtiefe
Prof. de excavación
Глубина выемки грунта

Larghezza max
Max. width
Largeur max.
Max. breite
Anchura max.
Макс. ширина

ES 50 ZT

5250 kg (11574 lb)

KUBOTA V2607-DI

33,8 kW (46,0 HP)

3600 mm (141,7 in)

1980 mm (78,0 in)

ES 57 ZT

5600 kg (12345 lb)

KUBOTA V2607-DI

33,8 kW (46,0 HP)

3850 mm (151,6 in)

1980 mm (78,0 in)

ES 60 TR

6050 kg (13337 lb)

KUBOTA V2607-DI

33,8 kW (46,0 HP)

3950 mm (155,5 in)

1980 mm (78,0 in)

*** ES 85 ZT**

9000 kg (19842 lb)

YANMAR 4TNV98

46,3 kW (62,9 HP)

4270 mm (168,1 in)

2320 mm (91,3 in)

*** ES 95 TR**

9900 kg (21825 lb)

YANMAR 4TNV98

46,3 kW (62,9 HP)

4570 mm (179,9 in)

2320 mm (91,3 in)

*** ES 85 SB**

8300 kg (18298 lb)

YANMAR 4TNV98

46,3 kW (62,9 HP)

3800 mm (149,6 in)

2320 mm (91,3 in)

*** ES 90 UR**

9100 kg (20062 lb)

YANMAR 4TNV98

46,3 kW (62,9 HP)

4220 mm (166,1 in)

2320 mm (91,3 in)

ES 85 ZT4

9000 kg (18298 lb)

YANMAR 4TNV98CT

53,7 kW (73,0 HP)

4270 mm (168,1 in)

2320 mm (91,3 in)

ES 95 TR4

9900 kg (21825 lb)

YANMAR 4TNV98CT

53,7 kW (73,0 HP)

4570 mm (179,9 in)

2320 mm (91,3 in)

ES 85 SB4

8300 kg (18242 lb)

YANMAR 4TNV98CT

53,7 kW (73,0 HP)

3800 mm (149,6 in)

2320 mm (91,3 in)

ES 90 UR4

9100 kg (20062 lb)

YANMAR 4TNV98CT

53,7 kW (73,0 HP)

4220 mm (166,1 in)

2320 mm (91,3 in)





**CONCRETE SOLUTIONS.
ALWAYS**

PALE COMPATTE

SKID STEER LOADER / CHARGEUSES COMPACTES

КОМПАКТЛАДЕР / MINICARGADORAS / МИНИ-ПОГРУЗЧИКИ



* Available for EXTRA - UE and EXTRA - US MARKETS only



ESK 130.5



* **ESK 150.5**



ETL 140.5



* **ETL 160.5**



ESK 190



ETL 200



ESK 190 T4



ETL 200 T4

| Modello Model Modèle Modell Modelo Модель | Peso Weight Poids Betriebsgewicht Peso Масса | Tipo motore Engine type Type moteur Motor Motor Тип двигателя | Potenza motore Engine power Puissance moteur Motorleistung Potencia motor Мощность двигателя | Carico operativo Operating load Charge opérationnel Betriebshublast Carga operativa Рабочая нагрузка | Larghezza max Max. width Largeur max. Max. breite Anchura max. Макс. ширина |
|--|---|--|---|---|--|
| ESK 130.5 | 1830 kg (4034 lb) | KUBOTA V1505 | 26,1 kW (35,5 HP) | 485 kg (1069 lb) | 1250 mm (49,2 in) |
| * ESK 150.5 | 2750 kg (6063 lb) | CUMMINS B3.3NA T4i | 48,0 kW (64,4 HP) | 680 kg (1499 lb) | 1550 mm (61,0 in) |
| ETL 140.5 | 2380 kg (5247 lb) | KUBOTA V2203-M | 35,6 kW (48,4 HP) | 520 kg (1146 lb) | 1300 mm (51,2 in) |
| * ETL 160.5 | 3500 kg (7716 lb) | CUMMINS B3.3NA T4i | 48,0 kW (64,4 HP) | 1100 kg (2425 lb) | 1680 mm (66,1 in) |
| ESK 190 | 4350 kg (8598 lb) | YANMAR 4TNV98 | 63,9 kW (86,9 HP) | 1650 kg (3637 lb) | 1840 mm (72,4 in) |
| ETL 200 | 5470 kg (12059 lb) | YANMAR 4TNV98 | 63,9 kW (86,9 HP) | 2050 kg (4520 lb) | 2090 mm (82,3 in) |
| ESK 190 T4 | 4350 kg (8598 lb) | YANMAR 4TNV98CT | 53,7 kW (73,0 HP) | 1650 kg (3637 lb) | 1840 mm (72,4 in) |
| ETL 200 T4 | 5470 kg (12059 lb) | YANMAR 4TNV98CT | 53,7 kW (73,0 HP) | 2050 kg (4520 lb) | 2090 mm (82,3 in) |



TERNA E CARICATORE

BACHOE LOADER AND LOADER / TRACTOPELLE ET CHARGEUSE

BAGGERLADER UND RADLADER / MIXTA Y CARGADORA / ЭКСКАВАТОР-ПОГРУЗЧИК



E 245 K

TERNA / BACKHOE LOADER / TRACTOPELLE
BAGGERLADER / MIXTA / Погрузчик



E 245 K

CARICATORE / LOADER / CHARGEUSE
RADLADER / CARGADORA / Экскаватор

| Modello Model Modèle Modell Modelo Модель | Peso Weight Poids Betriebsgewicht Peso Macca | Tipo motore Engine type Type moteur Motor Motor Тип двигателя | Potenza motore Engine power Puissance moteur Motorleistung Potencia motor Мощность двигателя | Profondità di scavo Digging depth Prof. d'excavation Grabtiefe Prof. de excavación Глубина выемки грунта | Larghezza max Max. width Largeur max. Max. breite Anchura max. Макс. ширина |
|---|---|--|---|---|--|
| E 245 K TERNA BACKHOE LOADER TRACTOPELLE BAGGERLADER MIXTA Погрузчик | 3800 kg (8378 lb) | KUBOTA V2203 | 35,6 kW (48,4 HP) | 3000 mm (118,1 in) | 1450 mm (57,1 in) |
| E 245 K CARICATORE LOADER CHARGEUSE RADLADER CARGADORA Экскаватор | 3800 kg (8378 lb) | KUBOTA V2203 | 35,6 kW (48,4 HP) | / | 1450 mm (57,1 in) |

ESP

EUROCOMACH SPECIAL PLATFORM СПЕЦИАЛЬНАЯ ПЛАТФОРМА EUROCOMACH



* Available for EXTRA - UE and EXTRA - US MARKETS only



ESP 20 SR4



ESP 22 SR



ESP 25 ZT



ESP 50 ZT



ESP 60 ZT



*** ESP 100 ZT**

| Modello Model Modèle Modell Modelo Модель | Peso Weight Poids Betriebsgewicht Peso Масса | Tipo motore Engine type Type moteur Motor Motor Тип двигателя | Potenza motore Engine power Puissance moteur Motorleistung Potencia motor Мощность двигателя | Larghezza max Max. width Largeur max. Max. breite Anchura max. Макс. ширина |
|--|---|--|---|--|
| ESP 20 SR4 | 1820 Kg (4012 lb) | KUBOTA D1105-E3B | 16,2 KW (22HP) | min 990 mm (мин. 39,0 in) max 1300 mm (макс. 51,2 in) |
| ESP 22 SR | 2100 kg (4630 lb) | YANMAR 3TN76 | 13,8 kW (18,5 HP) | 1380 mm (57,1 in) |
| ESP 25 ZT | 2250 kg (4960 lb) | YANMAR 3TN76 | 13,8 kW (18,5 HP) | 1500 mm (59,1 in) |
| ESP 28.2 ZT | 2800 kg (6173 lb) | KUBOTA D1503-M | 24,9 kW (33,4 HP) | 1550 mm (61,0 in) |
| ESP 35.2 ZT | 3050 kg (6724 lb) | KUBOTA D1503-M | 24,9 kW (33,4 HP) | 1580 mm (62,2 in) |
| ESP 40.2 ZT | 3750 kg (8267 lb) | KUBOTA D1803-M | 28,3 kW (38,0 HP) | 1700 mm (66,9 in) |



ESP 28.2 ZT



ESP 35.2 ZT



ESP 40.2 ZT



*** ESP 100 UR**



ESP 100 ZT4



ESP 100 UR4

Modello
Model
Modèle
Modell
Modelo
Модель

Peso
Weight
Poids
Betriebsgewicht
Peso
Масса

Tipo motore
Engine type
Type moteur
Motor
Motor
Тип двигателя

Potenza motore
Engine power
Puissance moteur
Motorleistung
Potencia motor
Мощность двигателя

Larghezza max
Max. width
Largeur max.
Max. breite
Anchura max.
Макс. ширина

ESP 50 ZT

4900 kg (10803 lb)

KUBOTA D2607-DI

33,8 kW (46,0 HP)

1980 mm (78,0 in)

ESP 60 ZT

5200 kg (11464 lb)

KUBOTA D2607-DI

33,8 kW (46,0 HP)

1980 mm (78,0 in)

*** ESP 100 ZT**

9220 kg (20327 lb)

YANMAR 4TNV98

46,3 kW (62,9 HP)

STD: 2320 mm (91,3 in)
OPT: min 2320 mm (мин. 91,3 in)
max 2920 mm (макс. 115,0 in)

*** ESP 100 UR**

8720 kg (19224 lb)

YANMAR 4TNV98

46,3 kW (62,9 HP)

STD: 2320 mm (91,3 in)
OPT: min 2320 mm (мин. 91,3 in)
max 2920 mm (макс. 115,0 in)

ESP 100 ZT4

9220 kg (20327 lb)

YANMAR 4TNV98CT

53,7 kW (73,0 HP)

STD: 2320 mm (91,3 in)
OPT: min 2320 mm (мин. 91,3 in)
max 2920 mm (макс. 115,0 in)

ESP 100 UR4

8720 kg (19224 lb)

YANMAR 4TNV98CT

53,7 kW (73,0 HP)

STD: 2320 mm (91,3 in)
OPT: min 2320 mm (мин. 91,3 in)
max 2920 mm (макс. 115,0 in)

Sampierana S.p.A.

47021 S.Piero in Bagno (FC)

via Leonardo da Vinci, 40

Tel +39 0543.904211

Fax +39 0543.918520

www.sampierana.com



EUROCOMACH®



COMPANY WITH
QUALITY SYSTEM
CERTIFIED BY DNV GL
= ISO 9001 =